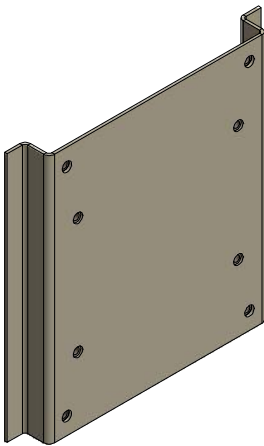
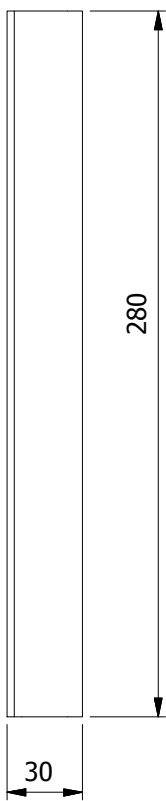
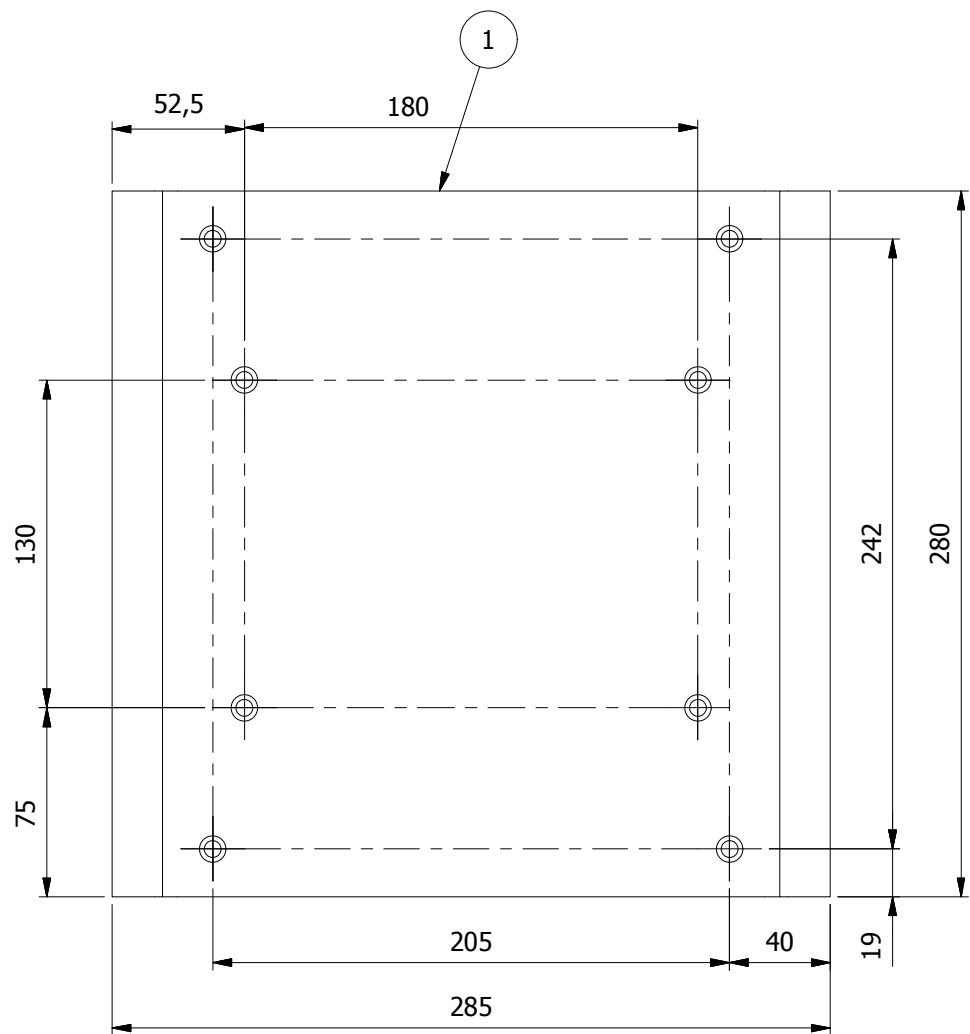


| INVENTORY NO. | SIGN & DATE | REF. DRG.NO. |
|---------------|-------------|--------------|
| | | 36680800204 |

| PARTS LIST | | | |
|------------|--------------|--------------------|-----|
| ITEM | PART NUMBER | DESCRIPTION | QTY |
| 1 | 36680800209 | BASE COVER SUPPORT | 1 |
| 2 | DIN 929 (SS) | M8 HEX. WELD NUT | 8 |



NOTE:-1. SS-304
2. REMOVE SHARP EDGES.
3. ALL WELD NUTS TO BE TACK WELDED 120° APART.

| | | | | | | |
|------|----------|-------------|-------------|----------|-----------------|-------------|
| | | | | | | |
| | | | | | | |
| QTY. | ITEM No. | DESCRIPTION | DRAWING NO. | ITEM No. | MATERIAL CODE | UT.Wt (kgs) |
| | | | | VARIANT | MATERIAL SPECN. | QTY. |

CARD TYPE 2

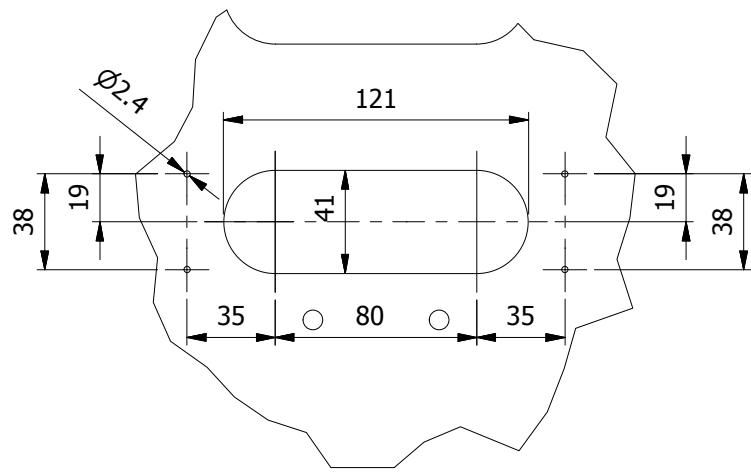
CARD TYPE 1

| | | | | | |
|--|------|------|-------|------|-----------------|
|  BHARAT HEAVY ELECTRICALS LIMITED. ELECTRONICS DIVISION, BANGALORE | | NAME | SIGN. | DATE | No. of Pages |
| | DRN | RAJU | | | |
| | CKD | SCS | | | |
| | APPD | SCS | | | |


| | | | | | | | |
|-------------|----------------------------|---|-------|------------|--------------------|----------|-----|
| DEPT. TE | FOR UNSPECIFIED-TOLERANCES |  | SCALE | WEIGHT(Kg) | REF. TO ASSY. DRG. | ITEM NO. | No. |
| CODE AAC | REFER ED 0230499 | | 1 : 4 | | | | |


| | | |
|----------------------------|------------------|----------|
| TITLE | DRAWING NO. | REVISION |
| BASE COVER SUPPORT ASSY | 3 668 08 00204 | 0 |
| SHEET NO. 01 | NO. OF SHEETS 01 | |

INVENTORY NO.



| | | | | | | |
|------|----------|------------------------|-------------|----------|-----------------|--------------|
| | | 3TK x 446.6 x 1621.1Lg | | | | |
| | | | | | | |
| QTY. | ITEM No. | DESCRIPTION | DRAWING NO. | ITEM No. | MATERIAL CODE | UT.Wt. (kgs) |
| | | | | VARIANT | MATERIAL SPECN. | QTY. |

| | | | | | |
|--|------|------|-------|------------|----|
|  BHARAT HEAVY ELECTRICALS LIMITED. ELECTRONICS DIVISION, BANGALORE | DRN | NAME | SIGN. | DATE | No |
| | | RAJU | | 18-04-2011 | |
| | CKD | SCS | | 19-04-2011 | |
| | APPD | SCS | | 19-04-2011 | |

| | | | | | | | |
|-------------|--------------------------------|---|--------------|------------|--------------------|----------|----|
| DEPT. TE | FOR UNSPECIFIED- TOLERANCES |  | SCALE 1:6 | WEIGHT(Kg) | REF. TO ASSY. DRG. | ITEM NO. | No |
| CODE 445 | REFER ED 0230499 | | | | | | |

TITLE DEVELOPED VIEW
(BASE COVER)

| | | |
|----------------|------------------|---|
| DRAWING NO. | | R |
| 3 668 08 00211 | | |
| SHEET NO. 02 | NO. OF SHEETS 02 | |

COPYRIGHT AND CONFIDENTIAL

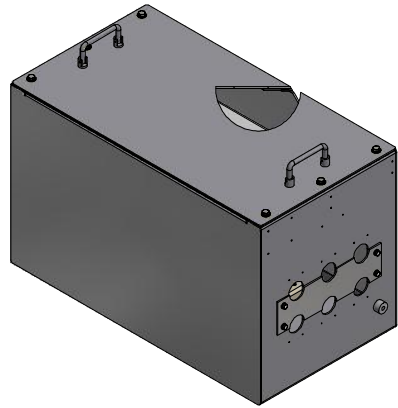
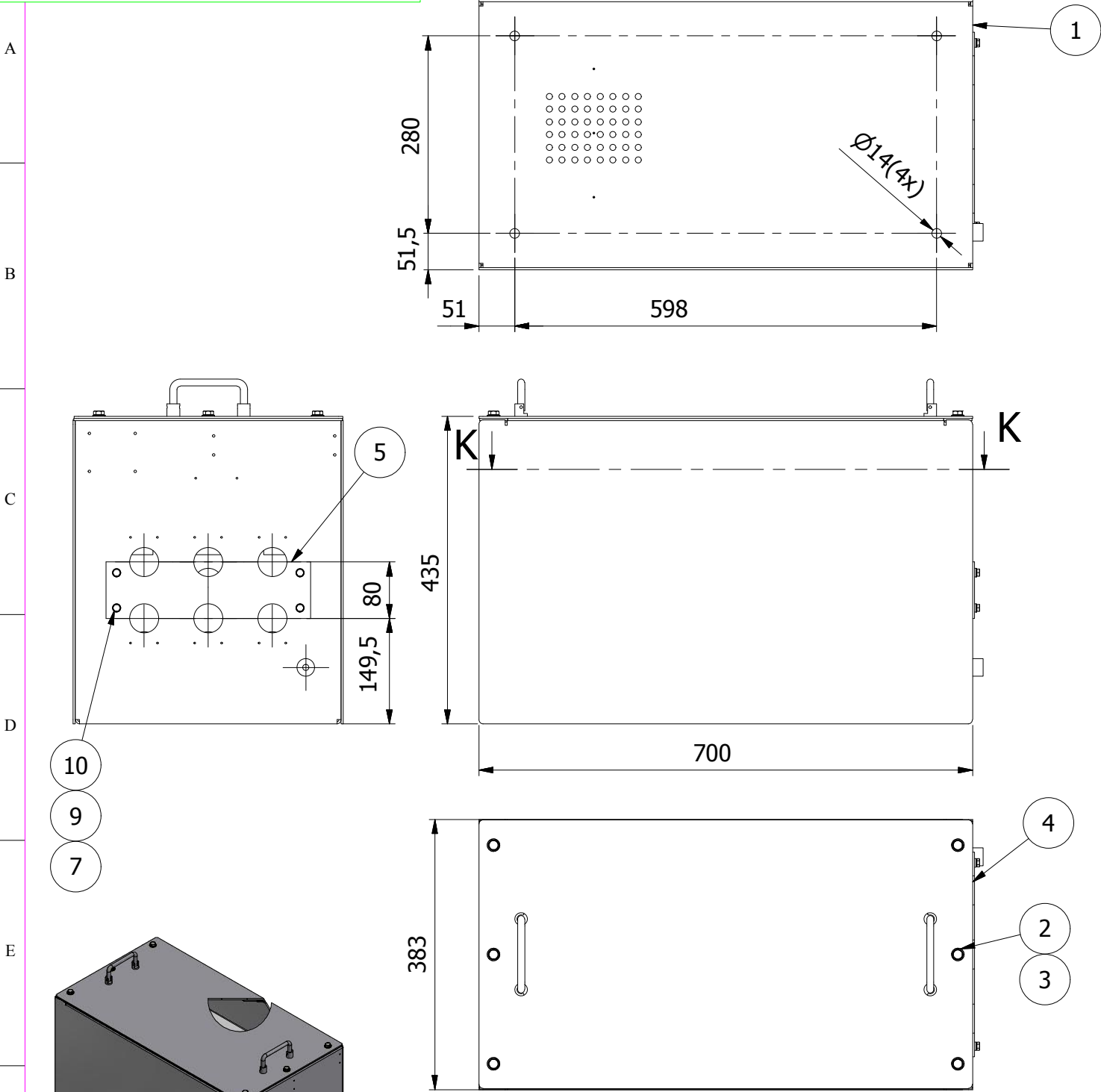
The information on this document is the property of Bharat Heavy Electricals Limited.
It must not be used directly or indirectly in anyway detrimental to the interest of the Company

REF. DRG.NO.
36680800213

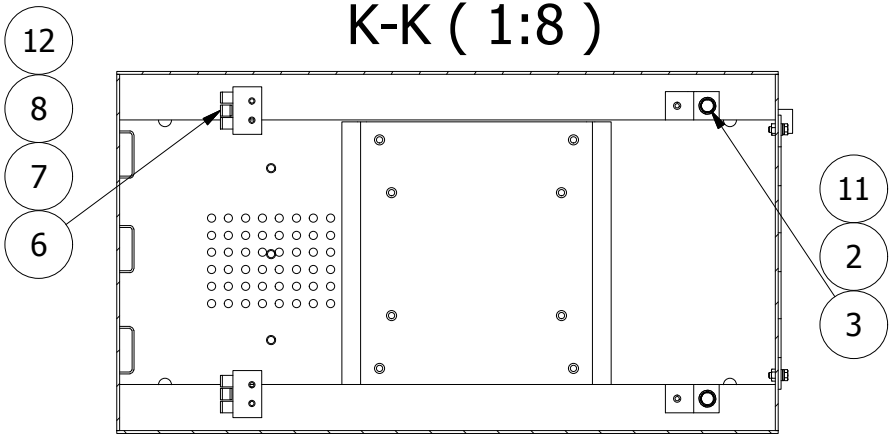
SIGN & DATE

INVENTORY NO.

3 668 08 00213
DRAWING NO.




| PARTS LIST | | | |
|------------|-----|-------------------------|--|
| ITEM | QTY | PART NUMBER | DESCRIPTION |
| 1 | 1 | 3 668 08 00210 | BASE COVER ASSY |
| 2 | 8 | NF E25-511 M8 | M8 contact washer |
| 3 | 8 | DIN 933 - M8 x 20 | Hex-Head Bolt |
| 4 | 1 | 3 668 08 00212 | TOP COVER ASSY. |
| 5 | 1 | 4 668 08 00747 | GLAND PLATE FOR OUTPUT PANEL |
| 6 | 2 | DIRAK PART NO.-219-9001 | SCREW ON HINGE FOR DIRAK LOCKING ARRGT |
| 7 | 10 | DIN 125 - A 6.4 | Washer |
| 8 | 6 | DIN 934 - M6 | Hex Nut |
| 9 | 4 | DIN 128 - A6 | Spring Washer |
| 10 | 4 | DIN 933 - M6 x 16 | Hex-Head Bolt |
| 11 | 2 | 4 668 08 00749 | Z BRACKET (FOR RESISTOR ASSY.) |
| 12 | 2 | 4 668 08 00748 | HINGE BRACKET (FOR RESISTOR ASSY.) |



| QTY. | ITEM No. | DESCRIPTION | DRAWING NO. | ITEM No. | MATERIAL CODE | UT.Wt. (kgs) |
|------|----------|-------------|-------------|----------|-----------------|--------------|
| | | | | VARI ANT | MATERIAL SPECN. | QTY. |

CARD TYPE 2

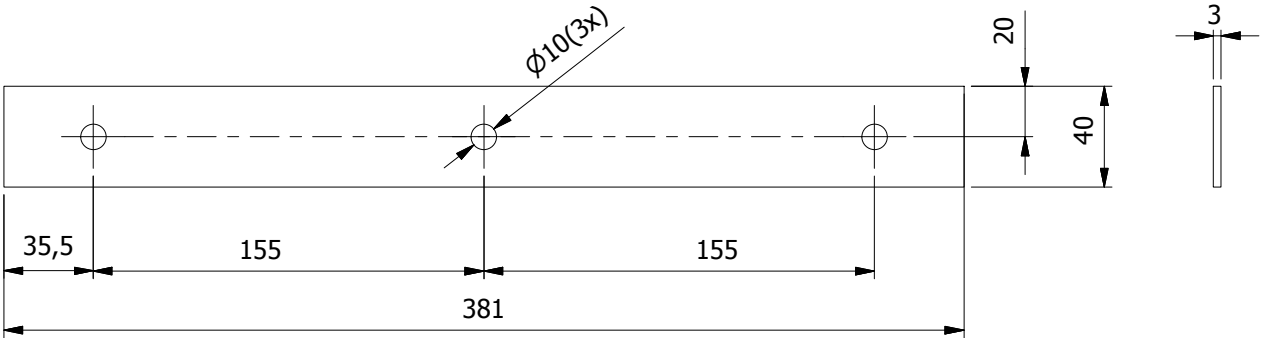
CARD TYPE 1

| | | | | | | | | |
|---|---|--|------------------|--------------------|----------------|----------|------------|--------|
|  | | BHARAT HEAVY ELECTRICALS LIMITED. ELECTRONICS DIVISION, BANGALORE | | DRN | NAME | SIGN. | DATE | No. OF |
| | | | | CKD | RAJU | | 19-04-2011 | |
| | | | | APPD | SCS | | 20-04-2011 | |
| DEPT. TE | FOR UNSPECIFIED-TOLERANCES REFER ED 0230499 | SCALE | WEIGHT(Kg) | REF. TO ASSY. DRG. | | ITEM NO. | No. OF | |
| CODE 445 | | 1:8 | | | | | | |
| TITLE | | | | | DRAWING NO. | | REV. | |
| OUTPUT CONTACTOR ASSY (EMPTY PANEL) | | | | | 3 668 08 00213 | | 05 | |
| SHEET NO. 01 | | | NO. OF SHEETS 01 | | | | | |


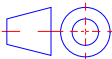
COPYRIGHT AND CONFIDENTIAL

The information on this document is the property of Bharat Heavy Electricals Limited.
It must not be used directly or indirectly in anyway detrimental to the interest of the Company

| REV. | DATE | ALTERED | REV. | DATE | ALTERED | REV. | DATE | ALTERED |
|------|------|----------|------|------|----------|---|------------|----------|
| | | CHECKED | | | CHECKED | 01 | 09.04.2018 | CHECKED |
| | | APPROVED | | | APPROVED | | | APPROVED |
| | | | | | | THICKNESS, WIDTH AND HOLE LOCATIONS CHANGED | | |



MATERIAL :- NEOPRENE SPONGE
HARDNESS :-25-30 SHORE 'A'
COLOUR :- BLACK

| | | | | | | | | | | |
|---------------|----------|---|--|---|-----------------|-------------|--------------------|------------|------------|-------------|
| REF. DRG.NO. | | 46680800209 | | HARDNESS :-25-30 SHORE 'A' | | | | | | |
| | | | | COLOUR :- BLACK | | | | | | |
| QTY. | ITEM NO. | DESCRIPTION | DRAWING No. | ITEM | MATERIAL CODE | A | UNIT Wt. (Kgs.) | | | |
| | | | | VAR. | MATERIAL SPECN. | C | QTY. | | | |
| | | | | | | | | | | |
| SIGN & DATE | |  | BHARAT HEAVY ELECTRICALS LIMITED. ELECTRONICS DIVISION, BANGALORE | | DRN | NAME | SIGN. | DATE | No. OF VAR | |
| | | | | | CKD | RAJU | | 18-04-2011 | | |
| | | | | | APPD | SCS | | 19-04-2011 | | |
| | | | | | APPD | SCS | | 19-04-2011 | | |
| INVENTORY NO. | DEPT. TE | FOR UNSPECIFIED TOLERANCES REFER ED 0230499 | |  | SCALE | WEIGHT (Kg) | REF. TO ASSY. DRG. | | ITEM NO. | No. OF ITEM |
| | CODE 445 | | | | 1:3 | | | | | |
| | TITLE | | | | | DRAWING NO. | | | | REV. |
| GASKET | | | | | 4 668 08 00209 | | | | 01 | |
| SHEET NO. | | | 01 | | NO. OF SHEETS | | | 01 | | |

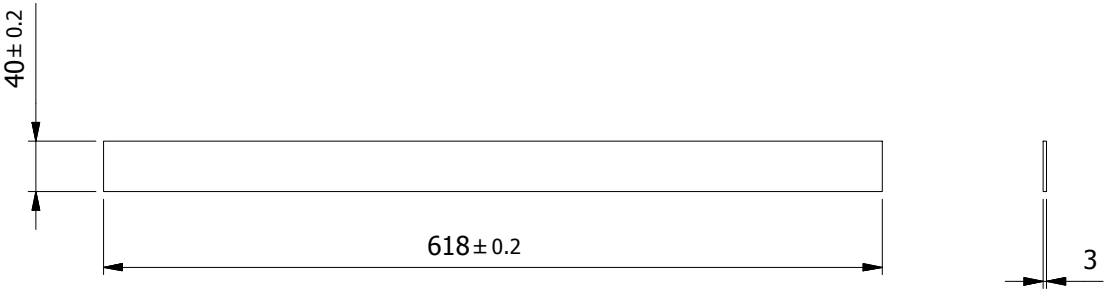
FIRST ANGLE PROJECTION

(ALL DIMENSIONS ARE IN MM)

COPYRIGHT AND CONFIDENTIAL
The information on this document is the property of Bharat Heavy Electricals Limited.
It must not be used directly or indirectly in anyway detrimental to the interest of the Company

| REV. | DATE | ALTERED | REV. | DATE | ALTERED | REV. | DATE | ALTERED |
|------|------|----------|------|------|----------|------|------------|---------|
| | | CHECKED | | | CHECKED | 01 | 09.04.2018 | AN |
| | | APPROVED | | | APPROVED | | | DV |

LENGTH 618 WAS 750 &
HOLES REMOVED



MATERIAL :- NEOPRENE SPONGE
HARDNESS :-25-30 SHORE 'A'
COLOUR :- BLACK

| QTY. | ITEM NO. | DESCRIPTION | DRAWING No. | ITEM | MATERIAL CODE | A | UNIT Wt. (Kgs.) |
|------|----------|-------------|-------------|------|-----------------|---|-----------------|
| | | | | VAR. | MATERIAL SPECN. | C | QTY. |



BHARAT HEAVY ELECTRICALS LIMITED.
ELECTRONICS DIVISION, BANGALORE

| DRN | NAME | SIGN. | DATE | No. OF VAR |
|------|------|-------|------------|------------|
| CKD | RAJU | | 16.12.2011 | |
| APPD | SCS | | 16.12.2011 | |

| DEPT. TE | FOR UNSPECIFIED TOLERANCES | SCALE | WEIGHT (Kg) | REF. TO ASSY. DRG. | ITEM NO. | No. OF ITEM |
|----------|----------------------------|-------|-------------|--------------------|----------|-------------|
| CODE 445 | REFER ED 0230499 | 1:6 | | | | |

| TITLE | DRAWING NO. | REV. |
|-----------------------|------------------|------|
| GASKET BOTTOM SIDE | 4 668 08 00228 | 01 |
| SHEET NO. 01 | NO. OF SHEETS 01 | |

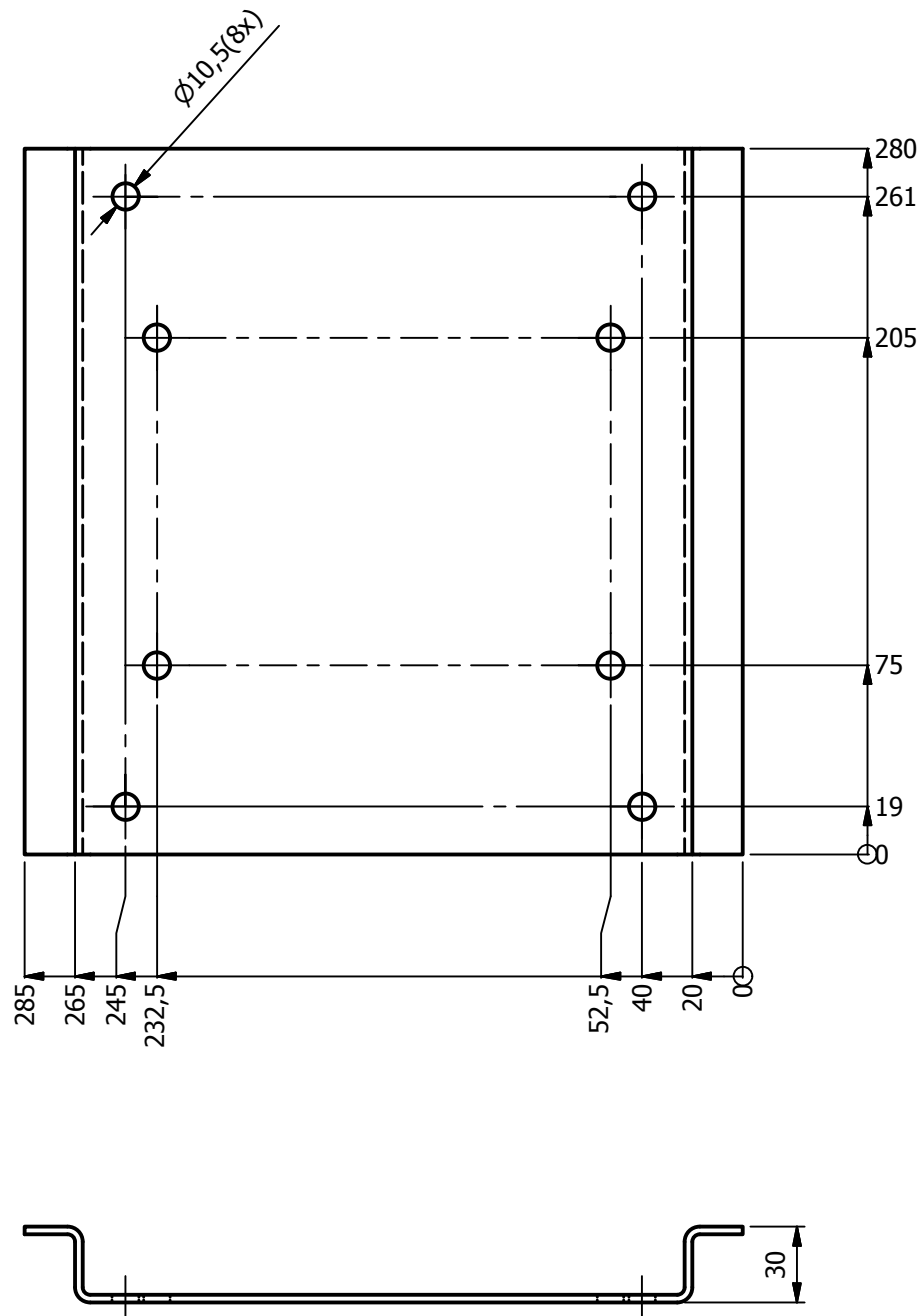
A4 SIZE

COPYRIGHT AND CONFIDENTIAL

RG.NO.
36680800209-01


SIGN & DATE

INVENTORY NO.



| | | | | | | |
|------|----------|-------------|-------------|----------|-----------------|--------------|
| | | | | | | |
| | | | | | | |
| QTY. | ITEM No. | DESCRIPTION | DRAWING NO. | ITEM No. | MATERIAL CODE | UT.Wt. (kgs) |
| | | | | VARIANT | MATERIAL SPECN. | QTY. |

CARD TYPE 1

| | | | | | |
|--|------|------|-------|------------|-----|
|  BHARAT HEAVY ELECTRICALS LIMITED. ELECTRONICS DIVISION, BANGALORE | | NAME | SIGN. | DATE | No. |
| | DRN | RAJU | | 18-04-2011 | |
| | CKD | SCS | | 19-04-2011 | |
| | APPD | SCS | | 19-04-2011 | |

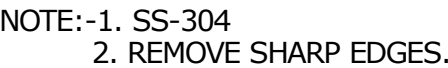
| | | | | | | | |
|-------------|----------------------------|---|-------|------------|--------------------|----------|-----|
| DEPT. TE | FOR UNSPECIFIED-TOLERANCES |  | SCALE | WEIGHT(Kg) | REF. TO ASSY. DRG. | ITEM NO. | No. |
| CODE 5 | REFER ED 0230499 | | 1 : 3 | | | | |

| | | | | | | | | | |
|-----------------------------|--|--|--|--|-------------------------------|--|------------------|--|---------------|
| 445 | | | | | | | | | |
| TITLE BASE COVER SUPPORT | | | | | DRAWING NO. 3 668 08 00209 | | | | REVISION C |
| | | | | | SHEET NO. 01 | | NO. OF SHEETS 02 | | |

COPYRIGHT AND CONFIDENTIAL

SIGN & DATE

INVENTORY NO.



CARD TYPE 2

बी.एच.ई.एस.

The diagram shows the orthographic projection of a cone. On the left is the front view, which is a trapezoid representing the cone's profile. On the right is the top view, which consists of two concentric circles representing the cone's base and top surface. A horizontal red line passes through the center of both views, indicating the axis of symmetry.

DEVELOPED VIEW

BASE COVER SUPPORT

COPYRIGHT AND CONFIDENTIAL

The information on this document is the property of Bharat Heavy Electricals Limited.
It must not be used directly or indirectly in anyway detrimental to the interest of the Company

REF. DRG.NO.

36680800210

SIGN & DATE

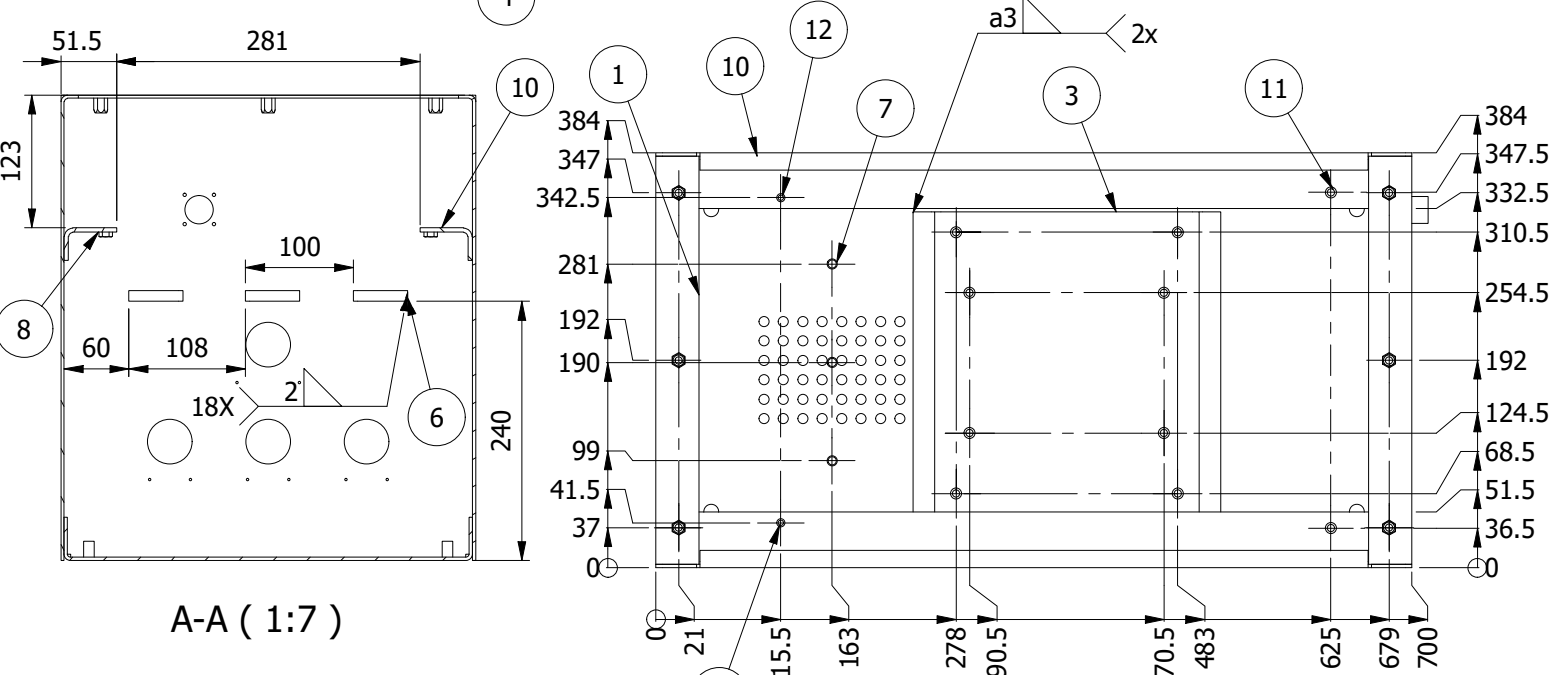
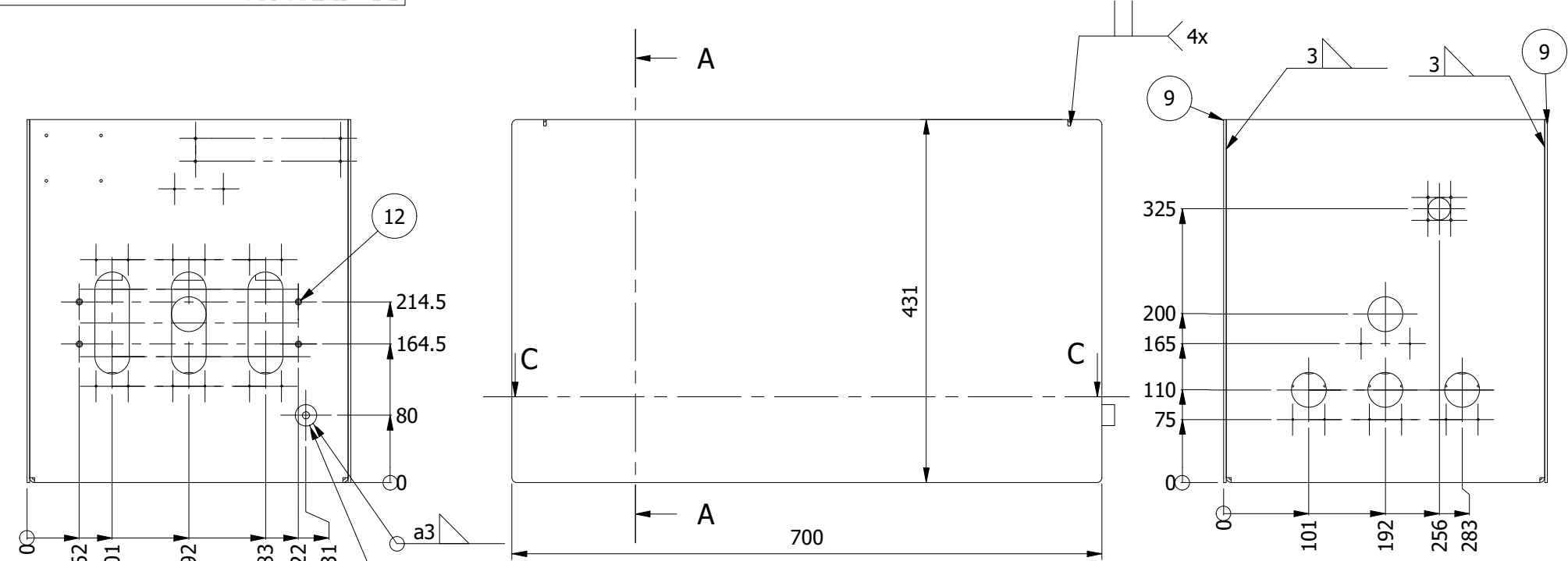
INVENTORY NO.

36680800210

DRAWING NO.

PARTS LIST

| ITEM | PART NUMBER | DESCRIPTION | QTY |
|------|---|--------------------------------|-----|
| 1 | 36680800211 | BASE COVER | 1 |
| 2 | AHS4-8125-3.88 | M8 hex rivet nut recessed head | 6 |
| 3 | 36680800204 | BASE COVER SUPPORT ASSY. | 1 |
| 4 | 46680800210 | EARTHING BUSH | 1 |
| 5 | 4 668 08 00330 | C-PROFILE (148 Lg) | 1 |
| 6 | CABLE STRIP(SST Grade 321 AS PER ASTM-A240) | 2THK x 10 x 50 Lg (HIGHT 15mm) | 7 |
| 7 | M8x16 lg STUD | STUD SS | 3 |
| 8 | L ANGLE (RH) | SS- 304 | 1 |
| 9 | SIDE PLATE FOR OUTPUT | SS - 304 | 2 |
| 10 | L ANGLE (LH) | SS - 304 | 1 |
| 11 | DIN 929 | M8 HEX. WELD NUT | 2 |
| 12 | hex weld nut | din 929 M6 | 6 |

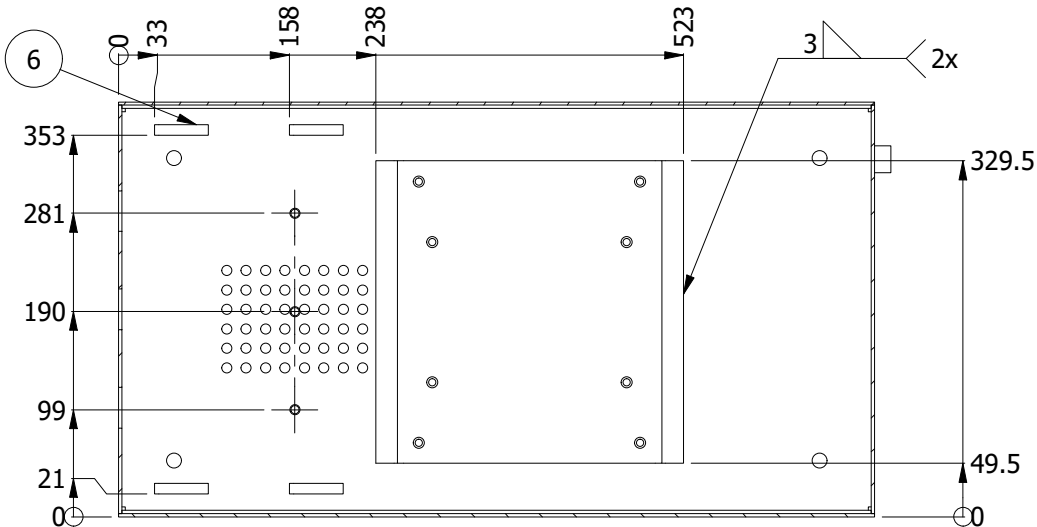


A-A (1:7)

NOTE :-

- 1) WELDING ACC.TO EN ISO 3834-4 :2005
- 2) ALL WELDES TO BE GROUND FLUSH FROM OUT SIDE.
- 3) BEFORE PICKLING COVER ALL WELDED NUTS.
- 4) PICKLING AND PASSIVATING ACC.TO EN 2516.

| REV. | DATE | ALTERED | CHANDRAPPA | REV. | DATE | ALTERED | CHANDRAPPA | REV. | DATE | ALTERED | CHANDRAPPA |
|------|------------|----------|-------------------------------|------|------------|----------|--|------|------------|----------|--|
| 08 | 09.06.2018 | CHECKED | A N | 10 | 16.11.2022 | CHECKED | ASHWATH | 09 | 30.10.2018 | CHECKED | ASHWATH |
| | | APPROVED | DV | | | APPROVED | J SHUKLA | | | APPROVED | DEVANAND |
| | | | DWG REVISED VIEW C-C ADDED | | | | DWG REVISED DIMENSION 99,190 & 281 WERE 98.5,189.5 & 280.5 | | | | VIEW UPDATED. AND ITEM NO.8 &10 WELDING POSTION CHANGE. |



C-C (1:7)

| QTY. | ITEM No. | DESCRIPTION | DRAWING NO. | ITEM No. | MATERIAL CODE | UT.Wt. (kgs) |
|------|----------|-------------|-------------|----------|-----------------|--------------|
| | | | | VARI ANT | MATERIAL SPECN. | QTY. |

CARD TYPE 2

CARD TYPE 1



BHARAT HEAVY ELECTRICALS LIMITED.
ELECTRONICS DIVISION, BANGALORE

| DRN | NAME | SIGN. | DATE | No. OF |
|------|------|-------|------------|--------|
| CKD | RAJU | | 18-04-2011 | |
| APPD | SCS | | 19-04-2011 | |

| DEPT. TE | FOR UNSPECIFIED-TOLERANCES REFER ED 0230499 | SCALE | WEIGHT(Kg) | REF. TO ASSY. DRG. | ITEM NO. | No. OF |
|----------|---|-------|------------|--------------------|----------|--------|
| CODE 455 | | 1:6 | | | | |

TITLE

BASE COVER ASSY

DRAWING NO.

3 668 08 00210

SHEET NO. 01

NO. OF SHEETS 02

COPYRIGHT AND CONFIDENTIAL

INVENTORY NO.

SIGN & DATE

REF. DRG.NO.

REV. 09

DATE 30.10.2018

ALTERED CHECKED APPROVED

CHANDRAPPA ASHWATH DEVANAND

REV. 08

DATE 08.06.2018

ALTERED CHECKED APPROVED

CHANDRAPPA ASHWATH DEVANAND

REV. 10

DATE 16.11.2022

ALTERED CHECKED APPROVED

CHANDRAPPA ASHWATH J SHUKLA

1

2

3

4

5

6

7

8

SHEET NO 01 REVISED.

SHEET NO 1 REVISED

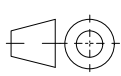
SHEET NO 1 REVISED

DEPT. TE

CODE 445

TITLE PARTS DETAILS FOR OUT PUT CONTACTOR

FOR UNSPECIFIED-TOLERANCES REFER ED 0230499



SCALE

WEIGHT(Kg)

REF. TO ASSY. DRG.

ITEM NO.

No. OF

DRN RC

CKD AN

APPD DV

NAME

SIGN.

DATE 09.04.2018

10.04.2018

10.04.2018

No. OF

3 668 08 00210

SHEET NO. 02

NO. OF SHEETS 02

REV. 10

ITEM NO 11

QTY. - 2 NOS

MATERIAL :- SS304

431

700

431

16

3

40.5

619

13.4

441.8

700

UP 90° R3

R6(4x)

ITEM NO 12

QTY. - 1 NOS

MATERIAL :- SS304

694

30

15

72

581.5

694

10

48.5

Ø10.5

Ø8

48.5

30

4

ITEM NO 10

QTY. - 1 NOS

MATERIAL :- SS304

694

30

15

72

581.5

694

10

48.5

Ø10.5

Ø8

48.5

30

4

3 668 08 00210

DRAWING NO.

3

4

5

6

7

8

Copyright and Confidential

The information on this document is the property of Bharat Heavy Electricals Limited. It must not be used directly or indirectly in anyway detrimental to the interest of the Company

3 668 08 00210

DRAWING NO.

COPYRIGHT AND CONFIDENTIAL

The information on this document is the property of Bharat Heavy Electricals Limited.
It must not be used directly or indirectly in anyway detrimental to the interest of the Company

REF. DRG.NO.

36680800212-02

SIGN & DATE

INVENTORY NO.

DRAWING NO.

3 668 08 00212

A

B

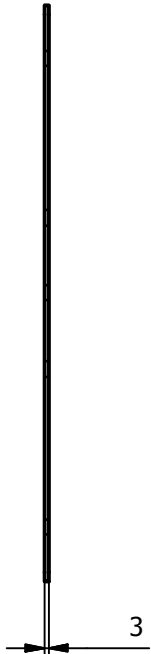
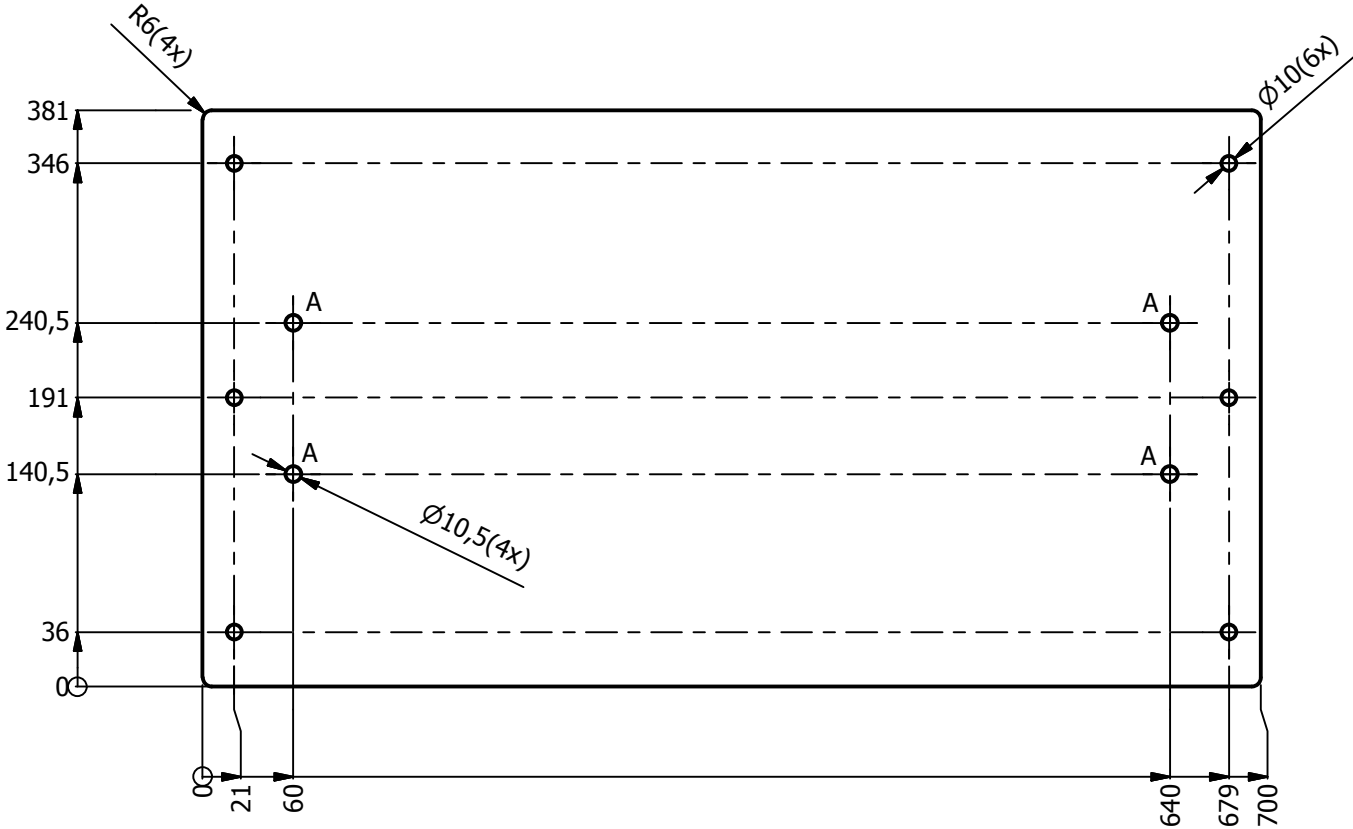
C

D

E

F

G



NOTE:-1. SS-304
2. REMOVE SHARP EDGES

| | | | | | | |
|------|----------|-------------|-------------|----------|-----------------|--------------|
| QTY. | ITEM No. | DESCRIPTION | DRAWING NO. | ITEM No. | MATERIAL CODE | UT.Wt. (kgs) |
| | | | | VARI ANT | MATERIAL SPECN. | QTY. |

CARD TYPE 2

CARD TYPE 1



BHARAT HEAVY ELECTRICALS LIMITED.
ELECTRONICS DIVISION, BANGALORE

| | | | | |
|------|------|-------|------------|--------|
| DRN | NAME | SIGN. | DATE | No. OF |
| | RAJU | | 19-04-2011 | |
| | CKD | | 20-04-2011 | |
| APPD | SCS | | 20-04-2011 | |

| | | | | | | | |
|----------|---|--|-------|------------|--------------------|----------|--------|
| DEPT. TE | FOR UNSPECIFIED-TOLERANCES REFER ED 0230499 | | SCALE | WEIGHT(Kg) | REF. TO ASSY. DRG. | ITEM NO. | No. OF |
| CODE 445 | | | 1:6 | | | | |

TITLE

DEVELOPED VIEW
(TOP COVER)

DRAWING NO.

3 668 08 00212

SHEET NO. 02

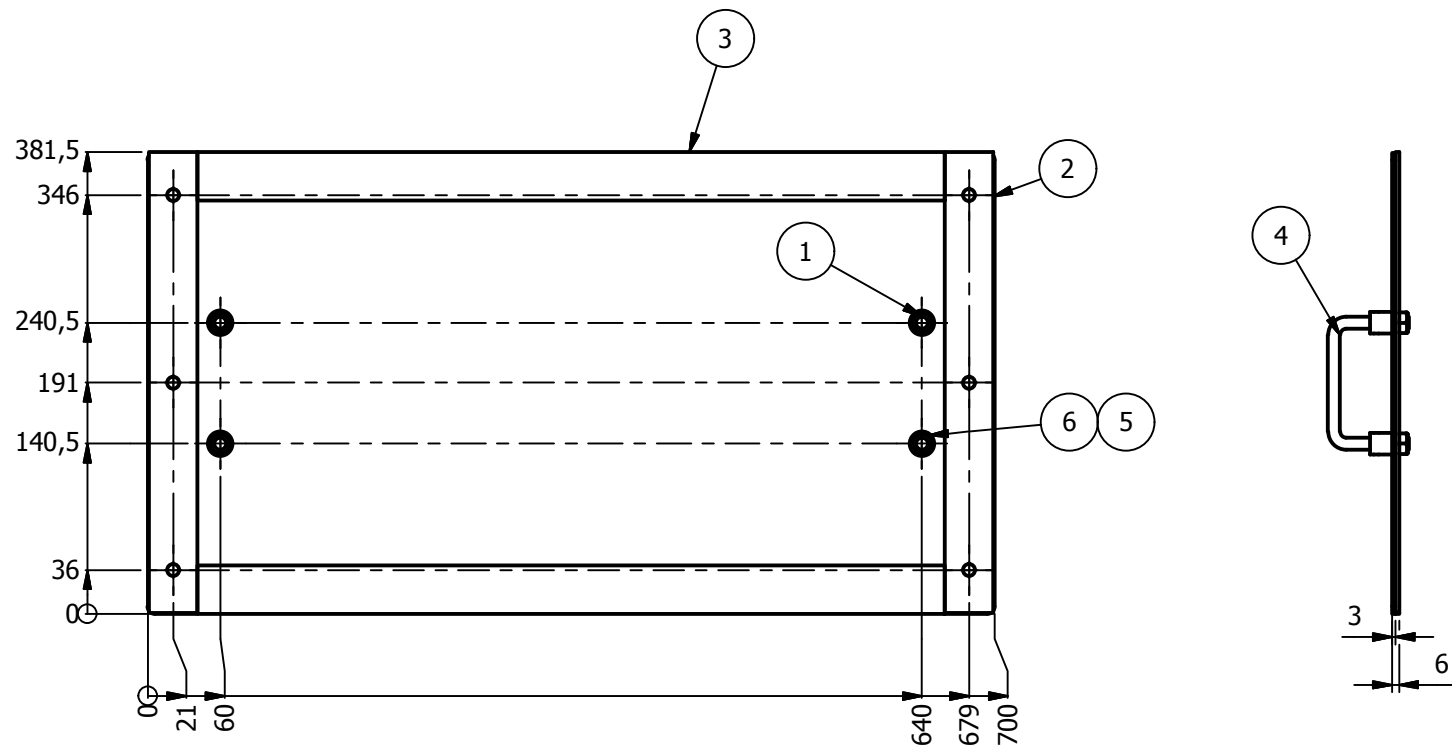
NO. OF SHEETS 02

REV.


05

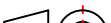
INVENTORY NO.

| | | | | | | |
|-------------------------|------------|-----|------------------|---|---------------|---|
| | 3 | 4 | 5 | 6 | 7 | 8 |
| <div><div>3</div></div> | PARTS LIST | | | | | |
| | ITEM | QTY | PART NUMBER | | DESCRIPTION | |
| | 1 | 1 | TOP COVER | | REFER SHEET 2 | |
| | 2 | 2 | 4 668 08 00209 | | GASKET | |
| | 3 | 2 | 46680800228 | | GASKET | |
| | 4 | 2 | DHM-10-100-B | | Stay Handle | |
| | 5 | 4 | DIN 125 - A 10.5 | | Washer | |
| | 6 | 4 | DIN 934 - M10 | | Hex Nut | |



| | | | | | | |
|------|----------|-------------|-------------|----------|-----------------|-------------|
| | | | | | | |
| | | | | | | |
| QTY. | ITEM No. | DESCRIPTION | DRAWING NO. | ITEM No. | MATERIAL CODE | UT.Wt (kgs) |
| | | | | VARIANT | MATERIAL SPECN. | QTY. |

| | | | | | |
|--|------|------|-------|--------------|-------|
|  BHARAT HEAVY ELECTRICALS LIMITED. ELECTRONICS DIVISION, BANGALORE | | NAME | SIGN. | DATE | No. C |
| | DRN | RAJU | | 19 .04 .2011 | |
| | CKD | SCS | | 20.04.2011 | |
| | APPD | SCS | | 20.04.2011 | |

| | | | | | | | |
|--------------------------|--|---|-------|-------------------------------|--------------------|------------------|------|
| DEPT. TE | FOR UNSPECIFIED- TOLERANCES REFER ED 0230499 |  | SCALE | WEIGHT(Kg) | REF. TO ASSY. DRG. | ITEM NO. | No. |
| CODE 445 | | | | | | | |
| TITLE TOP COVER ASSY. | | | | DRAWING NO. 3 668 08 00212 | | | REV. |
| | | | | SHEET NO. 01 | | NO. OF SHEETS 02 | |

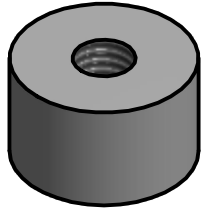
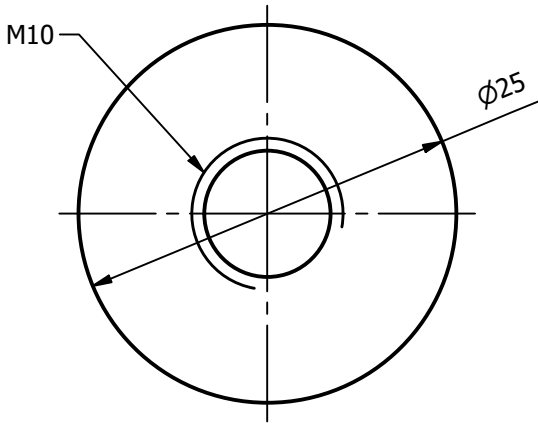
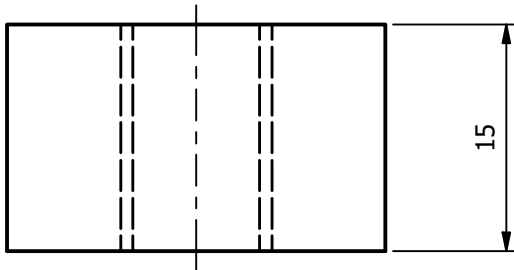
FIRST ANGLE PROJECTION



(ALL DIMENSIONS ARE IN MM)

COPYRIGHT AND CONFIDENTIAL

The information on this document is the property of Bharat Heavy Electricals Limited.
It must not be used directly or indirectly in anyway detrimental to the interest of the Company

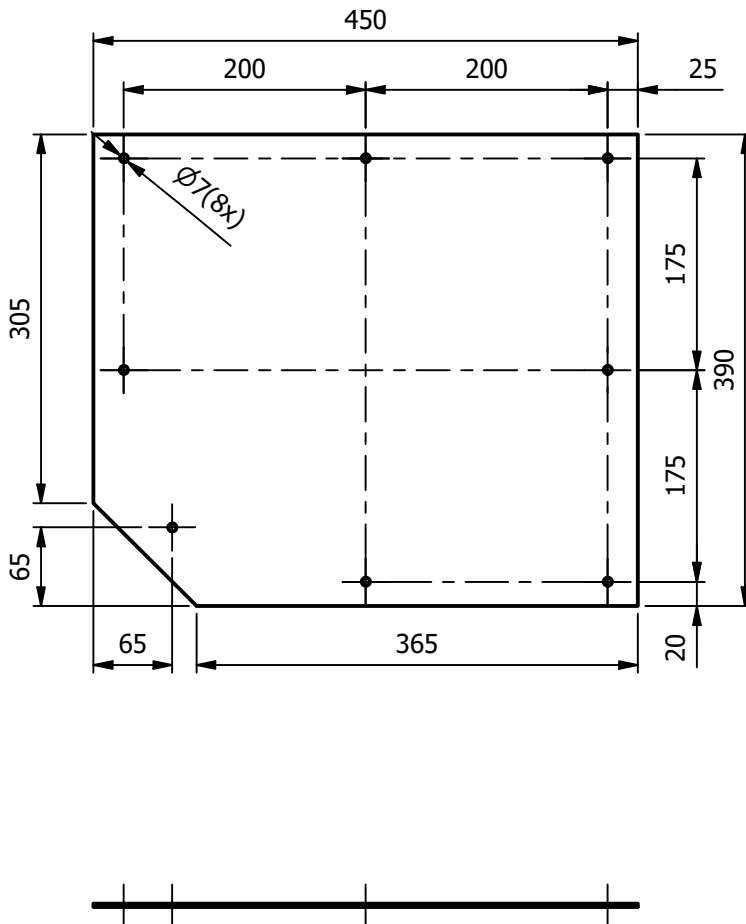
| REV. | DATE | ALTERED | REV. | DATE | ALTERED | REV. | DATE | ALTERED |
|------|------|----------|------|------|----------|-------------|------|----------|
| | | CHECKED | | | CHECKED | 00 | | CHECKED |
| | | APPROVED | | | APPROVED | | | APPROVED |
| | | | | | | FIRST ISSUE | | |



| | | | | | | | | | | |
|-----------------------------|---|--|-------------|---|---------------|-----------------|--------------------|-----------------|------------|-------------|
| 46680800210 REF. DRG.NO. | | | | | | | | | | |
| | | | DIA25 x 15 | | | SS304/1.4301 | | | | |
| | QTY. | ITEM NO. | DESCRIPTION | DRAWING No. | ITEM | MATERIAL CODE | A | UNIT Wt. (Kgs.) | | |
| | | | | | VAR. | MATERIAL SPECN. | C | QTY. | | |
| SIGN & DATE | | | | | | | | | | |
| |  | BHARAT HEAVY ELECTRICALS LIMITED. ELECTRONICS DIVISION, BANGALORE | | | DRN | NAME | SIGN. | DATE | No. OF VAR | |
| | | | | | CKD | RAJU | | 18-04-2011 | | |
| | | | | | APPD | SCS | | 19-04-2011 | | |
| INVENTORY NO. | DEPT. TE | FOR UNSPECIFIED TOLERANCES REFER ED 0230499 | |  | SCALE | WEIGHT (Kg) | REF. TO ASSY. DRG. | | ITEM NO. | No. OF ITEM |
| | CODE 445 | | | | | | | | | |
| | TITLE | | | | | DRAWING NO. | | | | REV. |
| | EARTHING BUSH | | | | | 4 668 08 00210 | | | | 00 |
| SHEET NO. | | | 01 | | NO. OF SHEETS | | | 01 | | |

A4 SIZE

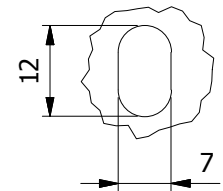
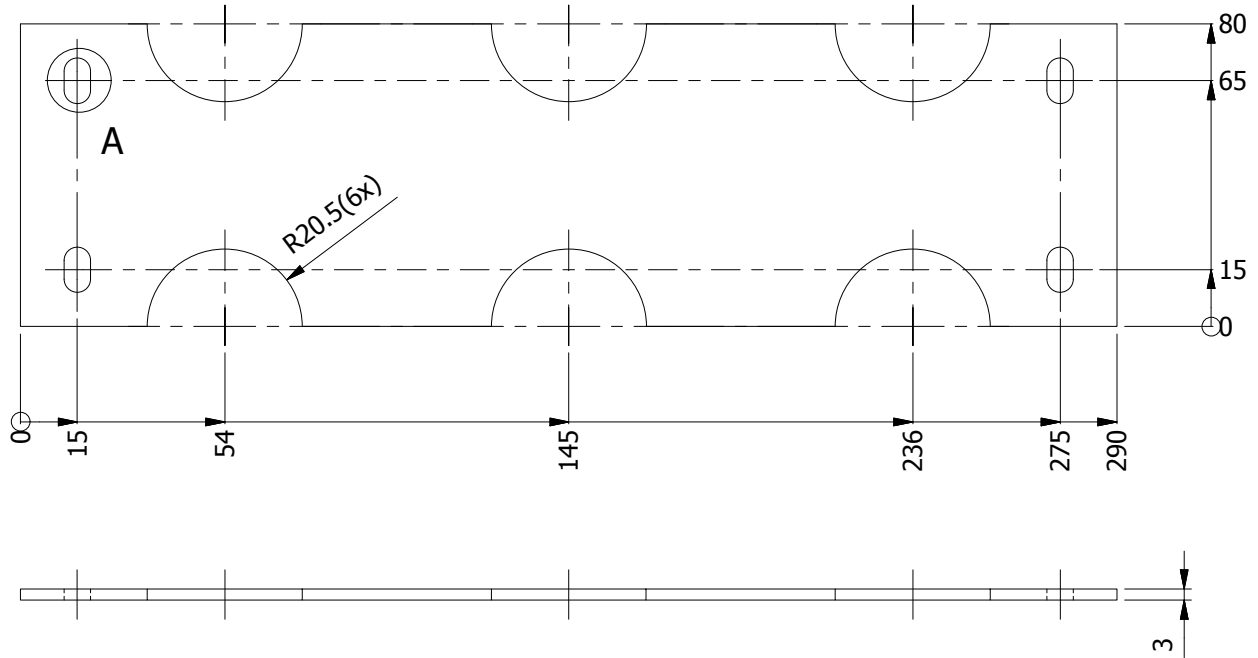
| REV. | DATE | ALTERED | REV. | DATE | ALTERED | REV. | DATE | ALTERED |
|------|------|----------|---|------------|----------|-------------|------|----------|
| | | CHECKED | 01 | 12.09.2013 | CHECKED | 00 | | CHECKED |
| | | APPROVED | | | APPROVED | | | APPROVED |
| | | | DWG REVISED AA22415 WAS CN9084275098 | | | FIRST ISSUE | | |



NOTE:-NOTE:- Epoxy Laminated Glass Fabric Base Sheet, NEMA - L1-1.
CUT EDGES AND DRILLED HOLES, COATED WITH ANTI TRACKING VARNISH.

| | | | | | | |
|------------------------------|------------------------------------|--|-------------|----------------|-------------|--------------------|
| 46680800215 REF. DRG. NO. | 3 THK x 390 x 450 Lg ELGF SHEET | | AA22415 | | | |
| | QTY. | ITEM NO. | DESCRIPTION | DRAWING No. | ITEM | UNIT Wt. (Kgs.) |
| SIGN & DATE | | | | | VAR. | QTY. |
| | | | | | | |
| INVENTORY NO. | BPH | | BPH | | DRN | No. OF VAR |
| | BPH | | BPH | | CKD | |
| | BPH | | BPH | | APPD | |
| | BPH | | BPH | | | |
| DEPT. TE CODE 445 | | FOR UNSPECIFIED TOLERANCES REFER ED 0230499 | | SCALE | WEIGHT (Kg) | REF. TO ASSY. DRG. |
| TITLE | | ELGF SHEET | | DRAWING NO. | | ITEM NO. |
| | | | | 4 668 08 00215 | | REV. |
| | | | | SHEET NO. 01 | | NO. OF SHEETS 01 |

| REV. | DATE | ALTERED | REV. | DATE | ALTERED | REV. | DATE | ALTERED |
|------|------|----------|------|------|----------|------|------|----------|
| | | CHECKED | | | CHECKED | | | CHECKED |
| | | APPROVED | | | APPROVED | | | APPROVED |



A (1 : 1)(4x)

NOTE:-

1. PICKLING AND PASSIVATING ACC.TO EN 2516.
2. REMOVE SHARP EDGES.

| | | | | | |
|---------------|----------|----------------------------------|-------------|----------|-----------------|
| REF. DRG. NO. | | 3 THK. x 80 x 290 Lg SS - 304 | | SS - 304 | |
| QTY. | ITEM NO. | DESCRIPTION | DRAWING No. | ITEM | MATERIAL CODE |
| | | | | VAR. | MATERIAL SPECN. |
| | | | | | UNIT Wt. (Kgs.) |
| | | | | | QTY. |



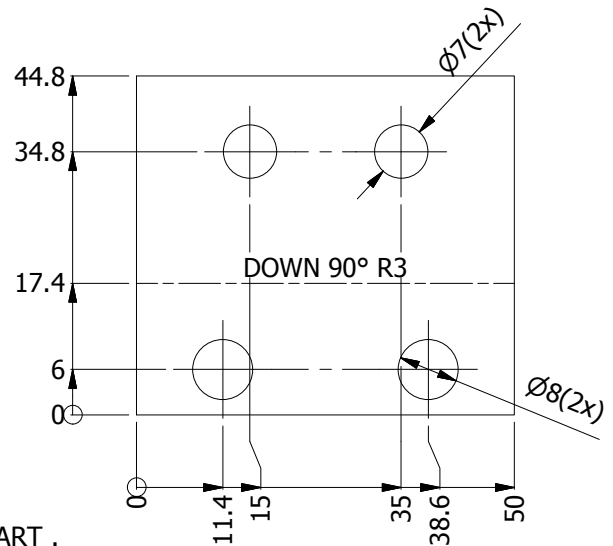
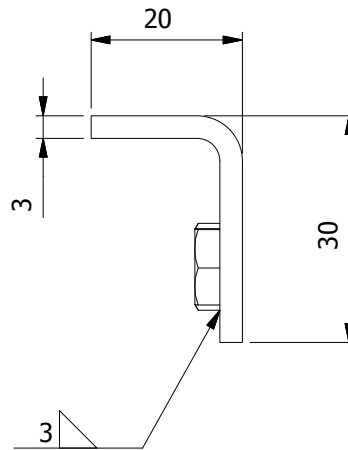
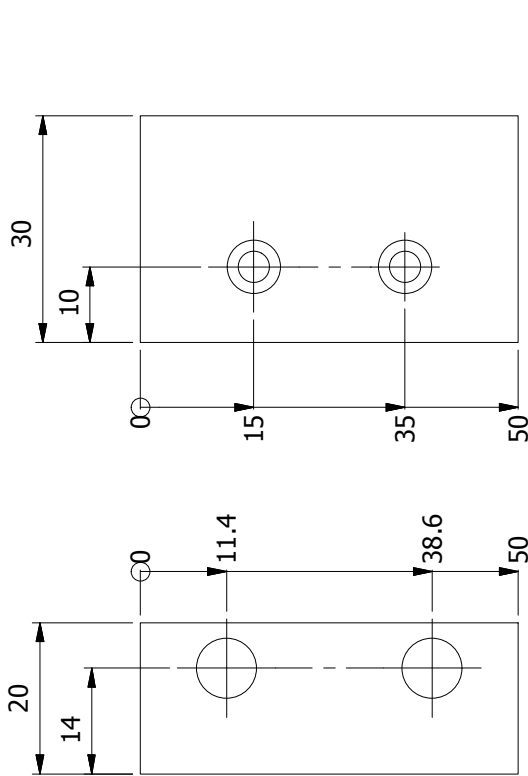
BHARAT HEAVY ELECTRICALS LIMITED.
ELECTRONICS DIVISION, BANGALORE

| DRN | NAME | SIGN. | DATE | No. OF VAR |
|------|------------|-------|------------|------------|
| CKD | CHANDRAPPA | | 29.10.2018 | |
| APPD | ASHWATH | | 30.10.2018 | |
| | DEVANAND | | 30.10.2018 | |

| | | | | | | | |
|--|----------------------|--|-------|-------------|--------------------------------------|----------|-------------------|
| INVENTORY NO. | DEPT. TE CODE 445 | FOR UNSPECIFIED TOLERANCES REFER ED 0230499 | SCALE | WEIGHT (Kg) | REF. TO ASSY. DRG. | ITEM NO. | No. OF ITEM |
| TITLE GLAND PLATE FOR OUTPUT PANEL | | | | | DRAWING NO. 4 668 08 00747 | | REV. 00 |
| SHEET NO. 01 | | | | | NO. OF SHEETS 01 | | |

COPYRIGHT AND CONFIDENTIAL

| REV. | DATE | ALTERED | REV. | DATE | ALTERED | REV. | DATE | ALTERED |
|------|------|----------|------|------|----------|------|------|----------|
| | | CHECKED | | | CHECKED | | | CHECKED |
| | | APPROVED | | | APPROVED | | | APPROVED |
| | | | | | | | | |




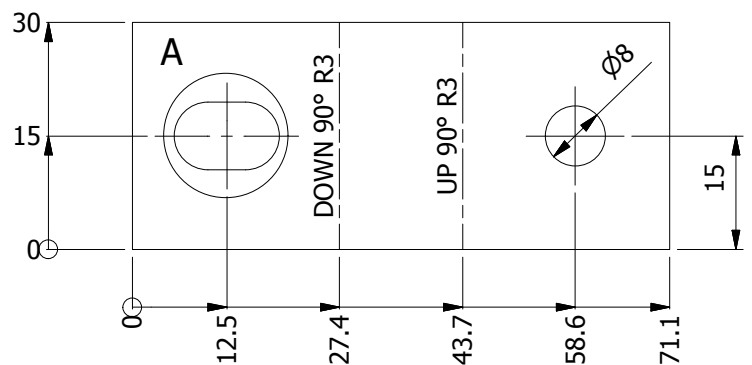
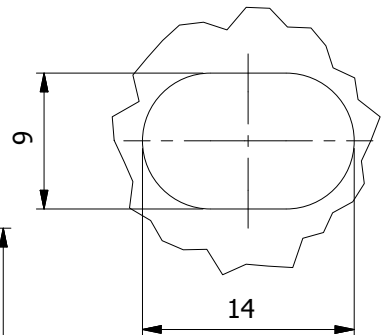
NOTE:-

1. PICKLING AND PASSIVATING ACC. TO EN 2516.
2. ALL WELD NUTS TO BE TACK WELDED 120° APPART .
3. REMOVE SHARP EDGES.

| | | | | | | | |
|------|----------|-----------------------------------|-------------|------|-----------------|---|-----------------|
| | | 3 THK. x 44.8 x 50 Lg SS - 304 | | | SS - 304 | | |
| | | | | | | | |
| QTY. | ITEM NO. | DESCRIPTION | DRAWING No. | ITEM | MATERIAL CODE | A | UNIT Wt. (Kgs.) |
| | | | | VAR. | MATERIAL SPECN. | C | QTY. |

| | | | | | | |
|---|--|------|------------|-------|------------|---------------|
|  | BHARAT HEAVY ELECTRICALS LIMITED. ELECTRONICS DIVISION, BANGALORE | DRN | NAME | SIGN. | DATE | No. OF VAR |
| | | | CHANDRAPPA | | 30.10.2018 | |
| | | CKD | ASHWATH | | 31.10.2018 | |
| | | APPD | DEVANAND | | 31.10.2018 | |

| | | | | | | | |
|---|----------------------------|---|-------|----------------|--------------------|---------------|----------------|
| DEPT. TE | FOR UNSPECIFIED TOLERANCES |  | SCALE | WEIGHT (Kg) | REF. TO ASSY. DRG. | ITEM NO. | No. OF ITEM |
| CODE 445 | REFER ED 0230499 | | | | | | |
| <div>TITLE</div> <div>HINGE BRACKET</div> | | | | DRAWING NO. | | | REV. |
| | | | | 4 668 08 00748 | | | 00 |
| | | | | SHEET NO. | 01 | NO. OF SHEETS | 01 |



1. PICKLING AND PASSIVATING ACC. TO EN 2516.
2. ALL WELD NUTS TO BE TACK WELDED 120° APPART .
3. REMOVE SHARP EDGES.

| | | | | | | |
|---|--|------|------------|-------|------------|---------------|
|  | BHARAT HEAVY ELECTRICALS LIMITED. ELECTRONICS DIVISION, BANGALORE | DRN | NAME | SIGN. | DATE | No. OF VAR |
| | | | CHANDRAPPA | | 30.10.2018 | |
| | | CKD | ASHWATH | | 31.10.2018 | |
| | | APPD | DEVANAND | | 31.10.2018 | |

A4 SIZE